

CapTel®



Captioned Telephone

Braille CapTel

CapTel Solutions for People

with Combined Hearing and Vision Loss

CapTel[®]

Captioned Telephone

Captioned Telephones
that fit your lifestyle.



Large Visual Display



Traditional Phones



Touch Screen Phones



Mobile Apps

Large Display Captions

CapTel 880i

- 11" display
- Large buttons
- Easy, familiar design



Large Display Captions

CapTel 2400i

- 11" display
- Extra large font sizes
- Color touch screen for easy navigation options
- Dial-by-picture capability



Braille CapTel®

CapTel 880iB

Braille Displays

- Braille captions on your dynamic braille display
- Requires a dedicated phone line and high speed Internet service
- CapTel 880iB does not support WiFi
- Braille displays connect via Bluetooth or USB
- Power Line Network Adapters (PLNAs) not recommended



Braille CapTel®

CapTel®
Captioned Telephone

For People who are Deaf-Blind
and Voice for Themselves

CapTel 880iB >

Read braille captions of telephone conversations on your dynamic braille display. Easy to connect using Bluetooth or USB.

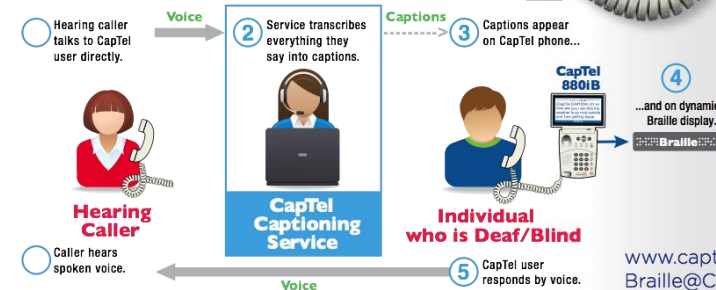


< Mobile Braille Capability

Users can make/receive calls on a mobile device, such as an iPhone®, then read braille captions of the conversation using Braille WebCapTel. Portable, no wires, convenient. Works with any dynamic braille display.



How It Works



www.captel.com/braille
Braille@CapTel.com

For more information
about Braille CapTel:



903-532303 11/16

Low Vision Solutions

Large Display Captions

For People with Both Hearing and Vision Loss

CapTel IP captioning service enables people who are deaf or hard of hearing to communicate over the phone by providing captions of the conversation. These extra large display options are designed for individuals who have difficulty viewing standard-sized captions.

CapTel 880i

The large display screen and extra large font sizes are designed for individuals with low vision. Variable font sizes and colors let you customize the captions to a style that is easiest to read.

CapTel 2400i

The built in display features extra large font sizes and bright, touch-screen display for easy navigation through options. Includes dial-by-picture capability to simplify dialing for people with vision loss.

Requirements:

- Telephone service
- High-speed Internet access



CapTel
Captioned Telephone



www.captel.com

Copyright 2016. CapTel is a registered trademark and Braille CapTel is a trademark of Ultratec, Inc. iPhone is a registered trademark of Apple, Inc. Bluetooth is a registered trademark of Bluetooth SIG. All other marks are the property of their respective owners.

Ultratec

DeafBlind Agencies

iCanConnect

(National DeafBlind Equipment Distribution Program: NDBEDP)

Helen Keller National Center

Perkins School for the Blind

We are working with these agencies as helper/installers

Questions and Answers

- Q. Do you have a list of agencies where I can get a CapTel 880iB?
- A. A list of iCC agencies is provided on the CapTel.com/braille website.

Questions and Answers

Q. Where can I get a CapTel 880iB?

A. Users can get it through NDBEDP (iCanConnect) or other agencies that support DeafBlind users.

The 880i is not sold on our website, at stores or directly to customers. This is a specialized product.

Questions and Answers

Q. Does a Braille display come with the CapTel 880iB?

A. No. The customer will use their own or will have to get one through their supplier.

NOTE: A list of compatible Braille displays and a support video are listed on website:

www.captel.com/braille

John Kinstler
Braille CapTel Product Manager
Ultratec, Inc.

450 Science Drive

Madison, WI 53711

(800) 482-2424 ext. 3008

(608) 232-5316

Email: John.kinstler@captel.com or
Braille@CapTel.com

Web: www.captel.com/braille.php